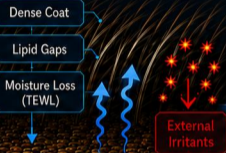


# VELA by BIO-ESTER Care: The Third Axis for Pet Skin Barrier Support

A Pet Barrier Sustainer System for **Daily Use and Structural Support**

**Unmet Zone**  
Daily Use + Structural Support

## 1 Problem The Challenge



Unstable barrier structure under the coat

## 2 Conventional Limitation Why It Falls Short



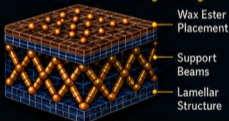
Surface application with low skin reach

## 3 VELA Mechanism How It Works

**Direct-to-Skin Placement**

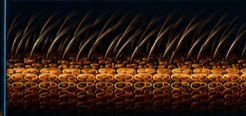
Pointed Applicator Cap

**Material Placement Engineering**



Skin-surface placement of lipid-supporting materials under the coat

## 4 Outcome What It Delivers



- Skin-Surface Structural Support
- Skin-Surface Lipid Continuity Support
- Daily Use + Structural Support
- Less Waste
- Better Usability

Improved barrier continuity and daily skin-surface support



**VELA is a Pet Barrier Sustainer System** designed to place lipid-supporting materials directly at the skin surface under the coat.

It supports daily barrier continuity through localized skin-surface placement.



Precision Targeting



Structural Support



Daily Use Advantage